

Annual Report

May 1, 2015



SUNRISE SIDE LIFELONG LEARNING

April 30, 2016

- Received a \$500 grant from Wal-Mart to purchase new color printer
- Received \$500 charitable contributions
- Continued to provide scholarships to departments of IRESA to further foster student learning. Gave \$1200 grants to IRESA special education and \$100 to other area agencies
- Held the second and last Fall Kick-off with Dr. J (Gary Johnson, Director of the Michigan Rock and Roll Hall of Fame)
- Acceptance into the Goodwill Loose Change Partnership
- Formation of Sustainability Committee to complete a three-year strategic plan
- Creation of committees to address organizational marketing, finances, technology, membership and program needs
- Purchased a second office computer
- Upgraded two office computers to Windows 10 and cloud-based systems
- Change in winter programming by providing a variety of free programs and interest groups
- Provided both a Spring/New Year Kick-off Event and a Fall Kick-off Event
- Provided four member meetings with interesting and entertaining speakers
- Continual increase in classes and trips offered and participation in SSLL events
 - 18 computer tutoring sessions
 - Ran 26 classes and 23 trips
 - 109 new members, not in year 1 or 2
- Gave 22 speaking engagements to 705 people, more than double the participants in year 2
- 15,672 hits on the web site from April 2015 through March 2016 up from 12,766 last year, a 23% increase.



New York City



Charlevoix Historical Tour



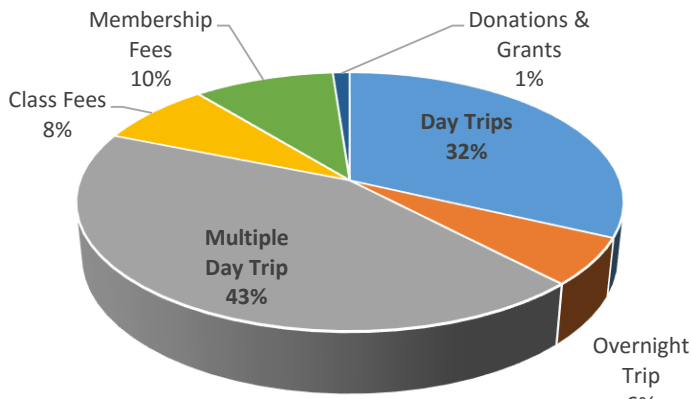
Fall Color Gliding Tour



SSL Annual Report (continued)

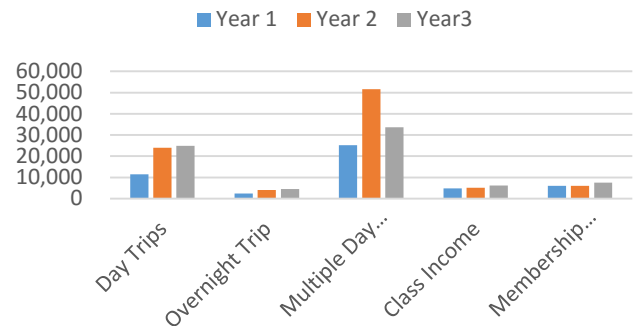
May 1, 2015 – April 30, 2016

SSL Income

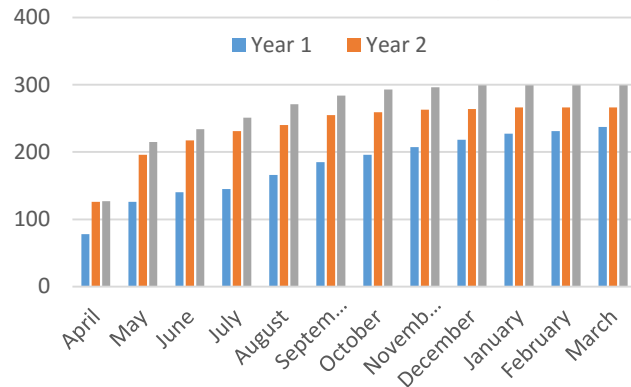


Year:	1	2	3
Day Trips	11,492	23,913	24,888
Overnight Trip	2,431	4,030	4,590
Multiple Day Trip	25,173	51,555	33,643
Class Fees	4,768	5,107	6,174
Special Event, Interest, Shirts	402	777	27
Membership Fees	6,005	6,000	7,570
Donations & Grants	415	844	909
Total May 2014 – April 2015	\$50,686	\$92,226	\$77,801

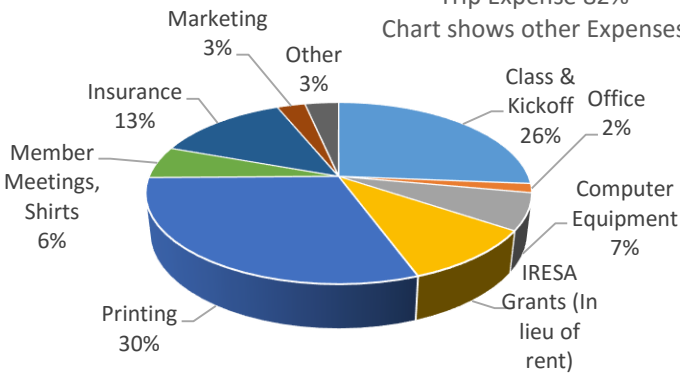
Income



Cumulative Membership

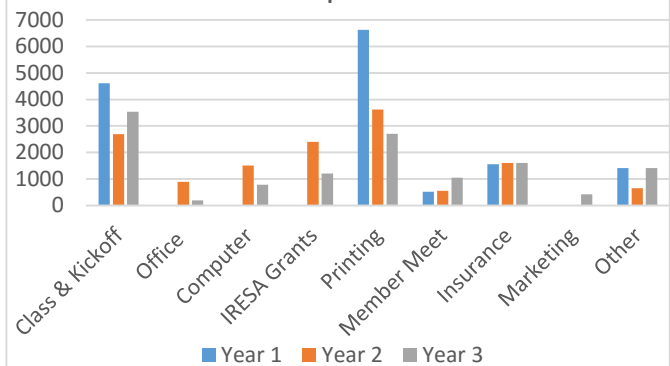


Trip Expense 82% Chart shows other Expenses



Expenses	Year 1	Year 2	Year 3
Trip	34,754	71,096	54,506
Class & Kickoff	4,613	2,693	3,160
Office	0	886	195
Computer	0	1,507	783
IRESA Grants (In lieu of rent)	0	2,400	1,200
Printing	6,628	3,622	3,654
Member Meetings, Shirts	517	755	690
Insurance	1,551	1,605	1,599
Marketing	0	0	338
Other	1,415	644	406
Total May 2015 – April 2016	\$49,478	\$85,011	\$66,531

Expenses



Event Summary

Event	Offered	Held	Enrolled	Event Profit
Classes	31	26	309	3,105
Day Trips	25	21	417	6,953
Overnight	1	1	19	666
Boston	1	1	49	1,370
Total	58	49	794	\$12,094